



# Zwingli United Church of Christ

Celebrating and Sharing God's Love

*Zwingli Hill News*

*October, 2021*

*Vol. 59 No. 8*

*For as in one body we have many members, and not all the members have the same function, so we, who are many, are one body in Christ, and individually we are members one of another. We have gifts that differ according to the grace given to us...*  
*--I Corinthians 12:4-6a*

In last month's mailing article I mentioned the work of folk in our congregation in the midst of a pandemic as a sign of the health and vitality of our church. As we move into the fall months and further into what's often called the program year, I find myself reflecting more and more on the labor and efforts of so many in our church. The ministry committees/teams remain active and do so much behind the scenes. Whether serving for two years, or more, the work of Council and each ministry is vital to fulfilling our call by God to serve in the church and world (a special thank you to those who have served five- or six-years in a ministry or as a moderator or in some other capacity!). Sunday School; keeping the building in good shape and safe; offering fellowship and snacks after church in a safe way; paying close attention to stewardship of time, talent and treasure; youth and LYFT activities; the Adult Electives offerings; overseeing staff and the worship and spiritual life of the church; creating mission projects and keeping us mindful of our call to serve the world; thinking of ways for Zwingli to be visible and connected with the community; offering meals after funerals; overseeing Eagle projects; overseeing the work of the church and making critical decisions about direction, priorities and business; offering hospitality; special projects and so much more...just thinking about all the members who work behind the scenes on a ministry or Council or team and all that is done is mind boggling. We are truly a blessed church. (As a little commercial, if you get a call from the Nominating Committee asking you to serve, please seriously consider saying yes!!)

But there's more! Musicians, cantors, the Bell Choir and those who provide special music; The Tech Team; the Return to Church Team; the ONA Team/Covenant Creation Committee/Implementation Team; keeping up with expenditures and income and making reports; dealing with offering envelopes and pledges; those who weed the gardens and deal with cutting the grass; those who help with office chores; those who deal with the worship space in various ways; ushers, greeters, and those who help with Facebook on Sunday mornings; those who help with technology planning and issues; countless other tasks that folk do quietly behind the scenes; being faithful to worship, prayer for the church and offering support – well, it's an incredible number of people involved in what it means to be Zwingli United Church of Christ (sorry if I've missed mentioning you or a group specifically!). I am thankful for all that you do, the ways that you serve, the dedication you offer, and the many ways you work to be one body in Christ and members of one another.

Your service reminds me of the word liturgy (seriously, bear with me here). I've heard various ways of defining liturgy. In seminary, I learned that the word literally means the "work of the people." Others have said it means the "work for the people," or using its root words, "public work" or "public service." Liturgy is a word we usually use to describe the worship service and how it's put together or how worship happens. However, I also like the idea that worship is a rehearsal for the week, a way to practice how we are to worship and praise God and offer good news to the world in the way we live our lives each day. So, if you buy into seeing worship in this way, then by extension you become the liturgy - or the work of the people and for the people each day in the world. In what you do for the church or in other ways you serve, you become the prayer, the praise, the song, the sermon, the offering, and the blessing that God uses in the world. We all have a gift or gifts that differ

according to the grace given us. May we be thankful for these gifts and be ready to use them according to God's will and purpose for Christ's church and ministry.

Blessings and Peace,  
Pastor Butch

**Table of Contents**

1	Labyrinth, Health News	9	Sunday School
2	World Communion Sunday	10	Zwingli Nursery School, General Fund Budget
3	ONA Celebration, Blessing of the Animals, All Saints' Sunday	11	Table of Plenty
4	Worship Instructions	12	Worship Volunteers
5	Prayer Circle, Still Going Strong (SGS)	13	Kids' Activities
6	Stewardship, Missions	14	October Birthdays
8	Youth Group, LYFT		



## **EAGLE PROJECT – LABYRINTH!!**

You may have noticed some work being done on our property near the adjoining park. Andrew Brown, a Life Scout with Troop 14 in Telford is constructing an outdoor labyrinth for his Eagle project. Andrew began scouting with Troop 401 and thought of Zwingli when it came time for him to discern a project for his work toward becoming an Eagle Scout. After consultation with the Trustees, Pastors, Moderator and a few others, the decision was made to create a labyrinth, which was affirmed by Council. Gene Moyer has been instrumental in this journey, providing needed insight and oversight. We're thrilled with Andrew's decision and work which will benefit Zwingli church's spiritual life and that of the community at large. Along with the prayer bench, neighbors and friends can find places to pray and commune with God.

We have often set up a portable labyrinth in our Family Life Center. Labyrinths were used in Christian spiritual practice as early as the 4<sup>th</sup> century, flourishing in Europe in the 11<sup>th</sup> and 12<sup>th</sup> centuries. Unlike a maze, which is designed to trick and confuse, the labyrinth is a single path into its center and out again, inviting the walker into sacred space and encouraging a pilgrimage of discovery about God and our interior life. In short, the labyrinth is a path for prayer and meditation and a way to deepen our faith.

Once completed, we will celebrate and dedicate the space with Andrew, his parents, and Troop 14. If you have any questions, please be in touch with Pastor Butch.



## **Tis the Season for Women's Health Breast Cancer Screening By Kristie Lowery, Faith Congregational Health Nurse**

*"And you will have confidence, because there is hope; you will be protected and take your rest in safety." Job 11:18*

October is National Breast Cancer Awareness Month. Breast cancer is the most common cancer in American women except for skin cancers. Currently, the average risk of a woman in the United States developing breast cancer sometime in her life is about **13%**. This means there is a 1 in 8 chance she will develop breast cancer. This also means there is a 7 in 8 chance she will never have the disease.

There is no sure way to prevent breast cancer. But there are things you can do that might lower your risk. This can be especially helpful for women with certain risk factors for breast cancer, such as having a strong family history or certain gene changes. Breast cancer screening means checking a woman's breasts for cancer before there are signs or symptoms of the disease. All women should be aware about the best screening options. Although breast cancer screening cannot prevent breast cancer, it can help find breast cancer early when it is easier to treat.

The United States Preventive Services Task Force recommends that women who are 50 to 74 years old and are at average risk for breast cancer get a mammogram every two years. Women who are 40 to 49 years old should talk to their doctor or other healthcare professional about

when to start and how often to get a mammogram. Women should weigh the benefits and risks of screening tests when deciding whether to begin getting mammograms before age 50. The following link, provided by the Centers for Disease Control, is a chart listing breast screening recommendations by specific organizations monitoring breast health. It is based on risk factors for developing breast cancer. [Breast Cancer Screening Guidelines for Women \(cdc.gov\)](https://www.cdc.gov/breastcancer/screening-guidelines/women)

*Breast Cancer Screening Tests* include:


- *Mammograms*: A mammogram is an x-ray of the breast. For many women, mammograms are the best way to find breast cancer early when it is easier to treat and before it is big enough to feel or cause symptoms. Having regular mammograms can lower the risk of dying from breast cancer. Currently, a mammogram is the best way to find breast cancer for most women.
- *Breast Magnetic Resonance Imaging (MRI)*: A breast MRI uses magnets and radio waves to take pictures of the breast. MRI is used along with mammograms to screen women who are at high risk for getting breast cancer.
- *Clinical Breast Exam*: A clinical breast exam is an examination by doctor or nurse, who uses his or her hands to feel for lumps or other changes.
- *Breast Self-Awareness*: Being familiar with how your breasts look and feel can help you notice symptoms such as lumps, pain, or changes in size that may be of concern. It is important to report any changes that you notice to your doctor or health care provider.

To all my sisters in Christ, I ask: where is breast awareness screening on your list of things to do? Are you up to date with having a mammogram or clinical breast exam? Are you diligent about breast self-awareness? If you are current and up to date, pat yourself on the back and continue to monitor your breast health. If it has been on your to do list, and have not gotten around to it, please consider making it a priority. You and your loved ones will have the peace of mind of knowing you are doing all you can to promote early detection and treatment!

Resources:

"What is Breast Cancer Screening?" Division of Cancer Prevention and Control, Center of Disease Control and Prevention. September 14, 2020. [What Is Breast Cancer Screening? | CDC](https://www.cdc.gov/breastcancer/screening-guidelines/women)

"Breast Cancer Screening Guidelines." Memorial Sloan Kettering. Reviewed September 21, 2021. [Breast Cancer Screening Guidelines | Memorial Sloan Kettering Cancer Center \(mskcc.org\)](https://www.mskcc.org/breast-cancer/screening-guidelines)



**October 3, 2021**

On October 3, we will celebrate World Communion Sunday with churches around the world. This celebration originated in the Presbyterian Church (USA) and was first observed in 1936. It celebrates our oneness in Christ and common call to serve a world in need of healing and peace.



## ONA CELEBRATION - OCTOBER 10

Join us for a unique worship service on Sunday, October 10, at 9 AM as we celebrate and finalize our affirmation of the Open and Affirming covenant. This memorable worship event is the culmination of the two-and-a-half years of work to become Open and Affirming. We hope you will celebrate with us this Sunday. You won't want to miss it!



Blessing of  
the animals

### **BLESSING OF THE ANIMALS (AND STUFFED ANIMALS)**

Animal lovers and friends, save the date! October 24th during our regular Sunday worship Zwingli will celebrate a Blessing of the Animals. Your pets on leashes, carriers or other appropriate means will be welcome to join us in worship to be blessed and appreciated! We also invite children to bring a stuffed animal to be blessed! Please stay tuned for more information.



## *All Saints' Sunday*

On November 7, 2021, we will celebrate what has become a very meaningful service in the life of this church. All Saints Day is traditionally a time when we celebrate and give thanks for the lives of all the saints, both known and unknown. On All Saints Sunday, those attending worship (online or in-person) will have an opportunity to honor the memory of someone who has died, or a living saint who has inspired their faith. We will also celebrate, in the presence of the "great cloud of witnesses" (or *communion of saints*), the Sacrament of Holy Communion. The service will look a bit different than similar ones before the pandemic, but we hope it will be meaningful for those in-person and watching on-line alike. Please be sure to worship with us on All Saints' Sunday at church, home, or wherever you may be as we celebrate the lives of the faithful that have gone before us and that are in our midst.



**JOIN US IN PERSON  
OR  
ONLINE FOR SUNDAY WORSHIP!**

***Follow the directions below for your choice of worship.***



### **IN-PERSON WORSHIP INSTRUCTIONS**

The Return to Church (RTC) team met recently and made the decision to return to masking indoors **for everyone** who attends services or uses our buildings. We also ask those attending on Sunday mornings to speak and sing softly during worship services as well.

Moving back to a policy requiring masks was a very difficult decision. We are acting in this way due to the rise in COVID-19 cases, the more aggressive behavior of the Delta variant, and information gleaned from Montgomery County and the CDC. The team was especially concerned for youth and children who have not been or are not able to be vaccinated.

We will continue to monitor pertinent information as we always have and make ongoing decisions about restrictions as new information is available. We ask for your patience and hope our church community can be flexible enough to move in and out of restrictions with ease, if necessary, as we keep in mind the safety of our congregation and the community at large.

We continue to ask for your help in protecting our entire congregation by staying home if you feel sick or are experiencing any of the following:

- Any symptoms of Covid-19 – cough, fever, loss of smell and/or taste, headache, or shortness of breath.
- Have cared for or been in close contact with anyone diagnosed with Covid-19 in the past 14 days. (Please note that this does not apply to health care professionals.)
- Have been advised to self-quarantine.
- Are currently infected with Covid-19 or are undergoing treatment for Covid-19.

Thank you for your continued support of our Zwingli community. The RTC Committee



### **ONLINE WORSHIP INSTRUCTIONS**

**To Worship On-Line, follow the directions below:**

Prelude music will begin at 8:45 am.  
Worship will begin at 9 am.

To join us on Facebook Live, please do the following:

Type the following web address  
[www.facebook.com/Zwingli.ucc](https://www.facebook.com/Zwingli.ucc)

(Note: Don't have a Facebook Account? No problem - directions to watch the worship service without a Facebook

account can be found at the bottom of announcement.)

To view the worship service at a later date:

Go to [www.zwingli.org](http://www.zwingli.org) or  
Go to Facebook.com/Zwingliucc or  
Go to Twitter #Zwingliucc or  
Check your weekly Z-News on Monday.

\*\*Directions to view worship service without creating a Facebook account:

1. Type in web address:  
[www.facebook.com/Zwingli.ucc/live](http://www.facebook.com/Zwingli.ucc/live)  
at 8:45 am.
2. If video is not playing, click the word "videos" in the left column, then look at the first video thumbnail under "all videos". This should be the most current Live video. If you are early, you may need to refresh the page by hitting F5 on your keyboard.
3. You DO NOT need to log in or sign up to be able to view the service.
4. Remember, if you load the page before the stream starts, the stream will not pop up. You will need to refresh the page.



### WEDNESDAY PRAYER CIRCLE

We will meet for Prayer Circle with Pastor Alan or Pastor Butch **each Wednesday** of the month from 12:00 to 12:30. The zoom invitation will be sent ahead of time. We

feel that heartfelt communal prayer is especially needed on a consistent basis as we continue to deal with individual, family and church concerns, the pandemics of COVID 19 and racism, as well as other societal issues and direction.



### STILL GOING STRONG

SGS will resume meetings on Thursday, October 14 at 12 noon. Membership is limited to human beings of any gender or any age as long as you can meet at noon. Normally we meet on the first Thursday of the month, but due to a conflict, this first meeting is on the second Thursday.

For the first meeting on October 14 at noon, we ask that everyone bring a potluck dish, it may be a casserole or dessert. Please sign up on the sheet located on our fellowship board. Also, this is our organizational meeting, so come with ideas for future programs and the willingness to be a host (providing dessert) or share a devotion. For more information contact Pam Myers or Carol Reiff.

For our newer members...SGS is a social group which also does a few service projects like the Cradle Roll for children up to 3 years old and Christmas bags for our shut-ins. We eat, laugh, go on field trips, laugh, listen to educational presentations, laugh, do creative projects, and laugh. If you're interested, please join us on October 14 at noon.



## 2021 STEWARDSHIP CAMPAIGN ROOTED IN LOVE

The U.C.C. 2021 stewardship campaign theme couldn't be more appropriate. It's called *Rooted in Love*. This refers to essentially all we do as a Christian, as a church member and as supporter of Zwingli's mission which is to welcome, care for and love our neighbors as our selves and love God above all else. Every human on this planet is a small piece of the face of God: loving one means loving the other. Plain and simple. As we offer our time, talents and treasure to support the church, we support its mission. We enable the congregation to spread God's love inward and outward. Our offerings are Rooted in Love just as is our extravagant welcome to all. Zwingli's steps toward becoming an Open and Affirming congregation means that when we get to that goal, we continue to walk the walk. That takes commitment as a congregation to continue to support that walk. We will reach our goals by ensuring Zwingli remains successful, and that includes being financially successful in meeting our budgeted expenses. As of August 31, 2021, offerings are about \$24,000 behind expenses. The Ministry of Stewards encourages the congregation to make up any past offerings missed during vacations. We also ask that for those who can to prayerfully consider a slight bump up in giving for the remainder of this year. Giving is higher than at this time last year, but it is not quite high enough to meet our current expenses. This is also a great time to start prayerfully considering your level of

giving for 2022. Our stewardship campaign will officially begin on Sunday, October 31<sup>st</sup> and will wrap up on Stewardship Sunday, November 21<sup>st</sup>. The Ministry of Stewardship is very grateful for the abundant and generous giving of Zwingli members.

# MISSIONS

## THANKSGIVING FOOD BAGS

Zwingli is collecting and assembling food packages for distribution to needy families in our community through Keystone Opportunity Center again this year. We will gratefully accept individual gift cards or food items from the list below or, if you feel so inspired, an entire Thanksgiving meal packed in a large plastic reusable or cloth bag. A list of food items can be found below plus it will be posted on the Missioner's bulletin board.

Complete bags and individual items can be left in the coat room. During the week, just buzz the office to let you in. There will be a labeled box for individual items.

Please help make Thanksgiving a happy day for those less fortunate! This collection ends on **Sunday, October 24th**, so we can deliver the baskets to Keystone that week.

Each complete Thanksgiving Basket must contain the following (no substitutes, please):

- 13-16 oz. box of instant mashed potatoes
- Two 24 oz. plastic jars of applesauce
- Two cans of fruit (in juice)
- One box brownie or cookie mix bag



- Two boxes of stove top stuffing
- Two cans of green beans
- Two cans of corn
- One 1 lb. can coffee
- Drink mix (powdered) of ice tea or lemonade
- One \$25 gift card for a turkey or other meat of their choice. The gift cards must only be for Walmart or Giant. Giant gift cards are available for purchase at the church office.

Gluten free bags are also welcome. Please indicate that the contents are totally gluten free.

If you are donating a complete bag, you can choose to add a few non-perishable grocery items if you like; i.e. holiday cookies, candies, nuts, seasonal paper napkins, decorations, etc. However, DO NOT include cash, additional gift cards, or anything beyond what's listed above.

### **2022 CALENDAR COLLECTIONS**

The calendar collection box has been moved to the vestibule to allow drop-offs during office hours and Sunday mornings. PLEASE NOTE: Do not donate any calendars with spiral binders of any kind; plastic, wire, etc. These are not permitted inside the prison and will be discarded.

### **CLOTHING COLLECTIONS RESUME**

With the resumption of clothing collections, the Missioners have decided to deliver the donations to Grace's Closet at Grace United Methodist Church in Telford. The clothes box has been moved to the vestibule so you can drop off clothes on weekdays when the office is open or Sunday mornings.

Grace's Closet has a new coordinator who reorganized the shop and spruced things up. Additionally, clothes can be dropped off 24/7 in a bin outside the back door. Plus not only are they open Sundays 11:30 am – 1:00 pm, they are also open Wednesday nights 6:00 – 8:00 pm. They are currently in need of volunteers for Wednesday evenings to sort & hang clothes. If you can help, please call Laura Rivera at 267-904-5207 or e-mail her at [laurathelovely@gmail.com](mailto:laurathelovely@gmail.com). Contact Jim See for further details.

### **PRISON PRAYER MINISTRY**

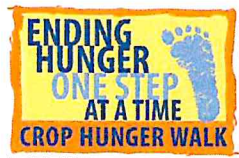
Prayer requests from SCI Phoenix in Graterford have resumed. The office received the first requests the end of August. Moving forward, these requests will be included in the bulletin the end of each month. Please pray for the request and write a brief request that can be sent back for the prisoners to pray for. Do not mention any last names in your request, but first names are OK. Praying for the prisoner is important, but equally important is to allow them to pray for you. It reassures them that we are praying for them and gives them sense of purpose praying for us. This is an intangible connection that helps them learn and grow closer to God.



**All Saints Sunday** is the first Sunday in November. We celebrate long ago saints and those known to us as saints; people who inspired us by grit and determination

to “keep on trying.” Many of those people are the pastors who lives shaped and influenced our own. Some of the PSEC pastors who retired years ago are now in need of special assistance. Because their retirement income is low, the churches of the Pennsylvania Southeast Conference supplement the cost of their health benefits.

We remember these saints as we receive the PSEC special All Saints offering. Your generosity will bring peace of mind and improved health to those who have served the church so faithfully in the past. The entirety of the offering is used to supplement the needs of 7 of the retired pastors, spouses, and widows in the Pennsylvania Southeast Conference who need assistance with health and dental insurance.



**38<sup>th</sup> Annual Penridge CROP Hunger Walk**  
**Walk Date: October 10, 2021**  
**Walkers and Sponsors Needed!**

This year we are back to face-to-face walking! We hope to see you all there. If you do not feel comfortable being face-to-face, please join us virtually at any point that weekend. Share a selfie with us!

**Registration:**

**5-mile walk** – 12:30 at St. Andrew's Lutheran Church, 20 Dill Avenue, Perkasie.

**Golden Mile** - 2:30 at Lenape Park, Walnut Street parking lot by the ball fields.

Bring canned food for Penridge FISH!

See Lisa Cinciripini if you want to walk with us this year.



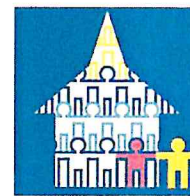
**YOUTH GROUP SOCIAL ACTIVITIES**

**October 23** – Haunted Hayride

**November 6-7** Sleepout for Homelessness

**December 24** – Christmas Eve Worship Help

**December 29** – Holiday Party!



**Linking  
Young  
Families  
Together**

**October Families Event**  
**October 16, 1 PM – 5 PM**

We are to be joined together as the body of Christ. To celebrate that, we will have some fun bonding together. Join our Linking Young Families Together (LYFT) group on Saturday, October 16, from 1 PM – 5 PM, for an afternoon of family fun at Merrymeade farms (2222 Valley Forge Rd., Lansdale, PA 19446). There will be a corn maze, hayrides, pumpkins, pumpkin decorating, fall décor, ice cream, apples, apple cider, apple cider donuts. Each activity is between 3-6 tickets, and tickets cost \$1.00 per ticket. Join us for lunch beforehand at a place to be determined. To RSVP for this event, please email Pastor Alan at [pastoralan@zwingli.org](mailto:pastoralan@zwingli.org), or leave a message in the church office. We hope to see you there!



## **SUNDAY SCHOOL TEACHERS/HELPERS WANTED**

Sunday School began September 19th. If you are interested in teaching or being a helper for our **Pre-K—2<sup>nd</sup> grade** class, our **3<sup>rd</sup>—5<sup>th</sup> grade** class, or our **youth group**, please sign up on the sign up genius links below. Any time you can volunteer is appreciated. Thank you!

### **Children's Sunday School**

<https://www.signupgenius.com/go/20F0A4FADAA2BAAFE3-sunday>

### **Youth Sunday School**

<https://www.signupgenius.com/go/20F0F49AFA62CA02-youth>

## **ADULT BIBLE STUDY**

We will meet every Sunday morning in person at 10:30 am (except the first Sunday when we join Adult Electives at 10:30.) We will be studying traditional Sunday School themes based on the Standard Sunday School Commentary. Our teachers are Jonathan Widgins, Toni Kramlik and Charlotte Kramer. The themes for 2021-2022 will be:

Sep, Oct, Nov 2021: Celebrating God  
Dec, Jan, Feb 2022: Justice, Law, History  
Mar, Apr, May 2022: God Frees and Redeems  
Jun, Jul, Aug 2022: Partners in a New Creation



## **ADULT ELECTIVES THIS FALL**

We will continue our practice of combining Adult Electives and Bible Study on the first Sunday of each month.

Topics for upcoming weeks will be:

### **October 3**

#### **Hope for Health**

Mary Benner, representing Hope for Health, has made many trips in the last ten years to Haiti. She will share her journey with us and will let us know what God has in store for her, especially in these very troubled times.

### **October 10**

#### **CROP Walk**

Church World Service/CROP is celebrating it's 75<sup>th</sup> anniversary. Please join us to learn more about the history of CWS/CROP and learn how the mission is the same, but changes that have been made to accomplish that mission. Zwingli is participating in the Penridge CROP Hunger Walk on this day. Sponsor a walker or register to walk.

### **October 17**

#### **The Basics of Wills and Estate Planning**

We are pleased to have Douglas Johnson share his expertise on this topic including, State options, Tax overview and what happens when there is no Will? How do the Statutory Law provisions factor in to the process? Join us in the sanctuary for this informative session.

## October 24 and 31

The documentary film by David and Kathi Peters, "Postcards from Babylon: The Church in American Exile" will be shown. This film investigates the question, "How does the church stay faithful to the beautiful way of Jesus while situated in one of the most divisive political climates in our nation's history."



### ZWINGLI NURSERY SCHOOL UPDATE

We are very excited to be back to school!! The children are learning the importance of wearing a mask and washing hands. Zwingli Bear is there as a reminder to stay safe and healthy.

The concepts we are learning this month are: the color red, the letters Aa and Bb, and the shape of a circle. They are learning about friendships and also, our playground and classroom rules to keep safe.

It has been a great start to the school year!!!



### SIMPLE WAYS TO HELP THE GENERAL FUND BUDGET

#### **GIANT, Landis and Shop Rite Gift Cards**

By purchasing **store gifts cards** from Zwingli Church, on a Sunday morning, you help contribute 5% of your store spending to the general fund of our church. AND, it doesn't cost you a cent. Purchase a \$25, \$50 or \$100 gift card to **Giant Stores, Landis Supermarket or Shop Rite** through the church office during the week. Thank you for your participation in this program!



### 2021 FLOWER AND BULLETIN SPONSORSHIPS

Would you like to sponsor the flowers in the chancel one Sunday morning or a bulletin?

Chancel flowers are \$39.

Bulletins are \$15.

For either/both sponsorship, please request a form from the church office or pick one up in the vestibule during office hours. Fill out the form and attach a check and place in the labeled box in the vestibule OR mail to 350 Wile Avenue, Souderton, PA 18964. We appreciate your support.



### **FASAGEO'S ITALIAN RESTAURANT AND PIZZERIA FUNDRAISER**

We have partnered with Fasageo's Italian Restaurant and Pizzeria, 724 Ridge Rd., Sellersville, PA for an ongoing fundraiser. Fasageo's will return 10% of any food sales purchased to Zwingli. You just need to inform them when placing your order for dine in, pick up, or delivery that you are a member of Zwingli. It's that simple!

### **SUPPORT ZWINGLI BY SHOPPING AMAZONSMILE!**

When you shop at AmazonSmile, Amazon will donate .5% of your purchase to the Zwingli UCC general fund. Just go to [smile.amazon.com](https://smile.amazon.com), designate Zwingli United Church of Christ as your charity, and start shopping! Or type in this link which will take you directly to Zwingli's Amazon page:

<https://smile.amazon.com/ch/23-6291301>

### **BULLETIN MAILINGS**

Would you like a bulletin mailed to you on a weekly basis? Please call the church office and we will add you to our weekly bulletin mailing list.



### **IF YOU ARE HOSPITALIZED**

Due to privacy procedures implemented by all healthcare facilities, it is much more difficult for the church to obtain information about patients than it has been in the past. **If you or a member of your family is hospitalized, or at a rehab or other health facility, please let the church office and the pastor(s) know directly.** This is the only way you can be certain this information will be received.



### **STAY INFORMED**

Do you want to stay current on what Zwingli Ministries and Council are doing? Pick up a Pre-Council Report from the memorial desk in the atrium. See the brilliant ideas that are being shared by your leaders!

### **THE TABLE OF PLENTY**

The Table of Plenty has voted to resume lunch service to our community. We need volunteers to help with this important mission. Lunch service will begin on Wednesdays only for the first few months. If you would like to help or would like more information about this mission, please contact Carol Reiff at 215-723-7014; 484-

213-6372 or email Carol at [carolreiff@yahoo.com](mailto:carolreiff@yahoo.com) Since we have been closed for over a year, our soup supply is depleted. If you can help by making soup or donating a package or two of the Bear Creek Soup it would be appreciated. Please let me know if you are able to help with this donation.



**"THANK YOU ZWINGLI!"**

*Thank you for the recognition of 20 years of service, the cards, prayers, kind words, gifts and love gift. You are super generous! And you are super sneaky – I was totally surprised. I am fortunate to have this position. It's not just a job to me, it's a ministry and Zwingli is my family. I am truly blessed."*  
 - Lisa Cinciripini

**SUNDAY MORNING USHERS/GREETERS**

- October 3 Dale and Susie Woodland  
Lois and Lee Hunsicker
- October 10 Gene and Rhonda Moyer  
Jessica and Mike Jalboot
- October 17 Joanne and LaMar Kratz  
Jonathan Kratz, Carol Wenger
- October 24 The Jalboots  
Karen and Pete Kispert
- October 31 Jack and Judy Dunn  
Liz Bibic, Marian Eide
- November 7 Jen Smeed, Miles Smeed  
Joan Yeager, Charlotte Kramer
- November 14 Lee and Lois Hunsicker  
The Chalmers

**REFRESHMENTS**

- October 3 Shepherds
- October 10 Carol Reiff, Karen Rosenberger
- October 17 Rhonda Moyer, Joanne Kramlik
- October 24 Marian Eide, Sue Rauch
- October 31 Sue Pro, Sandy Schuler
- November 7 Erin Chalmers, Lois Hunsicker
- November 14 Janet Whitefield, Eleta Hittinger

**FACEBOOK MONITOR**

- October 3 Kristie Lowery
- October 10 Kristie Lowery
- October 17 Lisa Cinciripini
- October 24 Laurie Reynolds

- October 31 Tony Villareal
- November 7 Kristie Lowery
- November 14 Lisa Cinciripini

**MONEY COUNTERS**

- October Steward of the Month: Joanne Kramlik
- October 3 Joanne Kramlik
- October 10 Carol and David Reiff
- October 17 Charlotte Kramer, Marian Eide
- October 24 Ed and Liz Bibic
- October 31 Jack and Judy Dunn
- November Steward of the Month: Tara Kuhnsman
- November 7 Tara Kuhnsman, Kristie Lowery
- November 14 Tara Kuhnsman, Erin Chalmers

**TRUSTEE ON DUTY-OCTOBER-** Pete Myers

**DEADLINE FOR SUBMITTING MAILING ARTICLES FOR THE NOVEMBER MAILING IS**

**MONDAY, OCTOBER 18.  
PLEASE INCLUDE ANY INFORMATION FOR ALL  
OF NOVEMBER AND THE FIRST TWO WEEKS  
IN DECEMBER.**



**Zwingli UCC Staff**

- Butch Kuykendall, D.Min.....Senior Pastor
- Alan Miles, M.Div..... Associate Pastor
- Steve Emery.....Director of Music/Organist
- Linda Cuddahy.....Nursery Caregiver
- Lisa Cinciripini.....Office Administrator
- Kristie Lowery.....Office Assistant

**Zwingli United Church of Christ, 350 Wile Avenue, Souderton, PA**

Phone: 215-723-1186 Fax: 215-723-5402

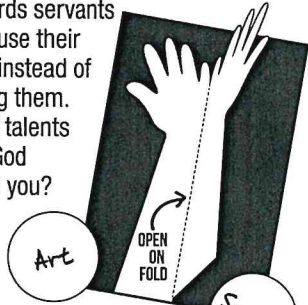
[www.zwingli.org](http://www.zwingli.org) [office@zwingli.org](mailto:office@zwingli.org)

**Office Hours:** M- TH: 8:30-4:30, F: 8:30-3:30  
Closed Daily 12-1



# FULL OF TALENT

In Matthew 25:14-30, the master rewards servants who use their gifts instead of hiding them. What talents has God given you?



## What you need:

- Construction paper (2 sheets)
- Pencil
- Scissors
- Glue
- Gold crayon or pen
- Black pen

## What you do:

1. Fold one sheet of paper in half lengthwise. Trace your hand and lower arm so your arm touches the folded edge. Cut out the arm and hand, keeping the folded edge uncut.
2. Glue the folded hand to the other sheet of paper.
3. In gold, draw five coins in the hand. In black, write the skills and gifts God has given you.
4. Open the fold and draw 10 gold coins in the two open hands. In black, write how you can use your skills and gifts to help others and honor God.



# MASTER MULTIPLICATION

Jesus tells a parable about faithful servants who multiply their master's money. How does the master respond?

*Directions: Solve the math problems. Find the letters that match the answers and write them in order to complete Matthew 25:21, NIV.*

1 (5) x 3 =	6 (6) x 6 =
2 (7) x 4 =	7 (9) x 3 =
3 (4) x 6 =	8 (3) x 8 =
4 (2) x 10 =	9 (10) x 4 =
5 (9) x 5 =	10 (11) x 8 =

## KEY

A = 28	J = 50	S = 88
B = 35	K = 21	T = 45
C = 14	L = 63	U = 64
D = 25	M = 15	V = 32
E = 33	N = 24	W = 80
F = 72	O = 77	X = 56
G = 40	P = 54	Y = 20
H = 36	Q = 9	Z = 48
I = 27	R = 16	

"His master replied, 'Well done, good and faithful servant!

You have been faithful with a few things;

I will put you in charge of \_\_\_\_\_.

Come and share your master's happiness!"

MATTHEW 25:21, NIV

Answer: 15, 28, 24, 20, 45, 36, 27, 24, 40, 88; many things